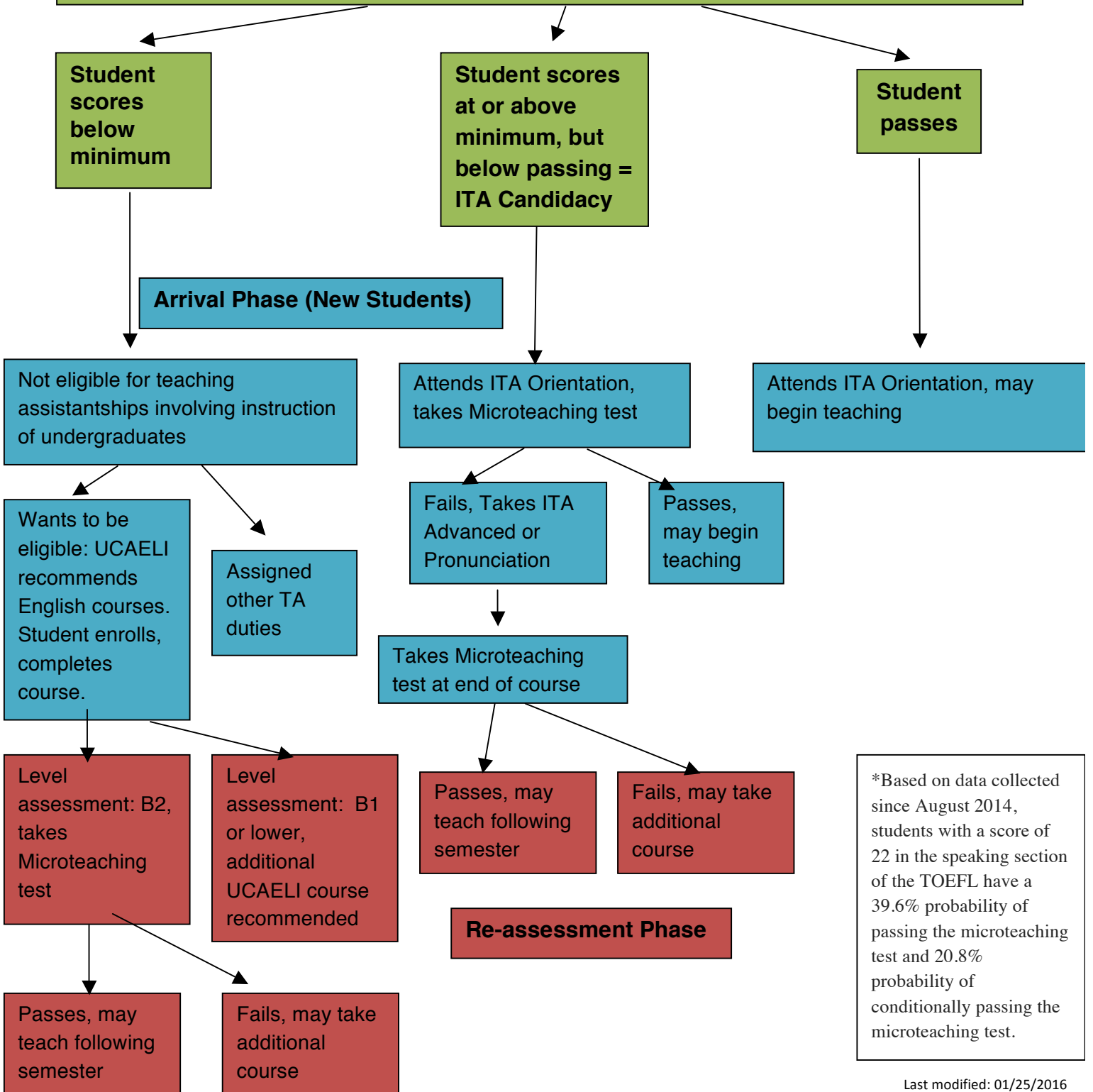


ITA Testing and English Courses

Admissions Phase

Departments screen applicants' admission test scores to identify prospective ITAs.
 IBT speaking score: 27 or higher = passes English Proficiency requirement, 22* (minimum) to 26 = ITA Candidacy
 IELTS speaking score: 8 or higher = passes English Proficiency requirement, 7 (minimum) or 7.5 = ITA Candidacy
 PTE score: 74 or higher = passes English Proficiency requirement, 62-73=ITA Candidacy



*Based on data collected since August 2014, students with a score of 22 in the speaking section of the TOEFL have a 39.6% probability of passing the microteaching test and 20.8% probability of conditionally passing the microteaching test.